



# Gender & Climate Justice

Understanding the Links

# Gender & Climate Justice 101

- ❖ **WHY** are people impacted differently by climate change?
- ❖ **WHAT** is climate justice?
- ❖ **HOW** are feminist organizing around climate action?



Climate change is  
*already* impacting  
communities.





# Climate change has a human face





**WHY** are people impacted  
*differently* by climate change?

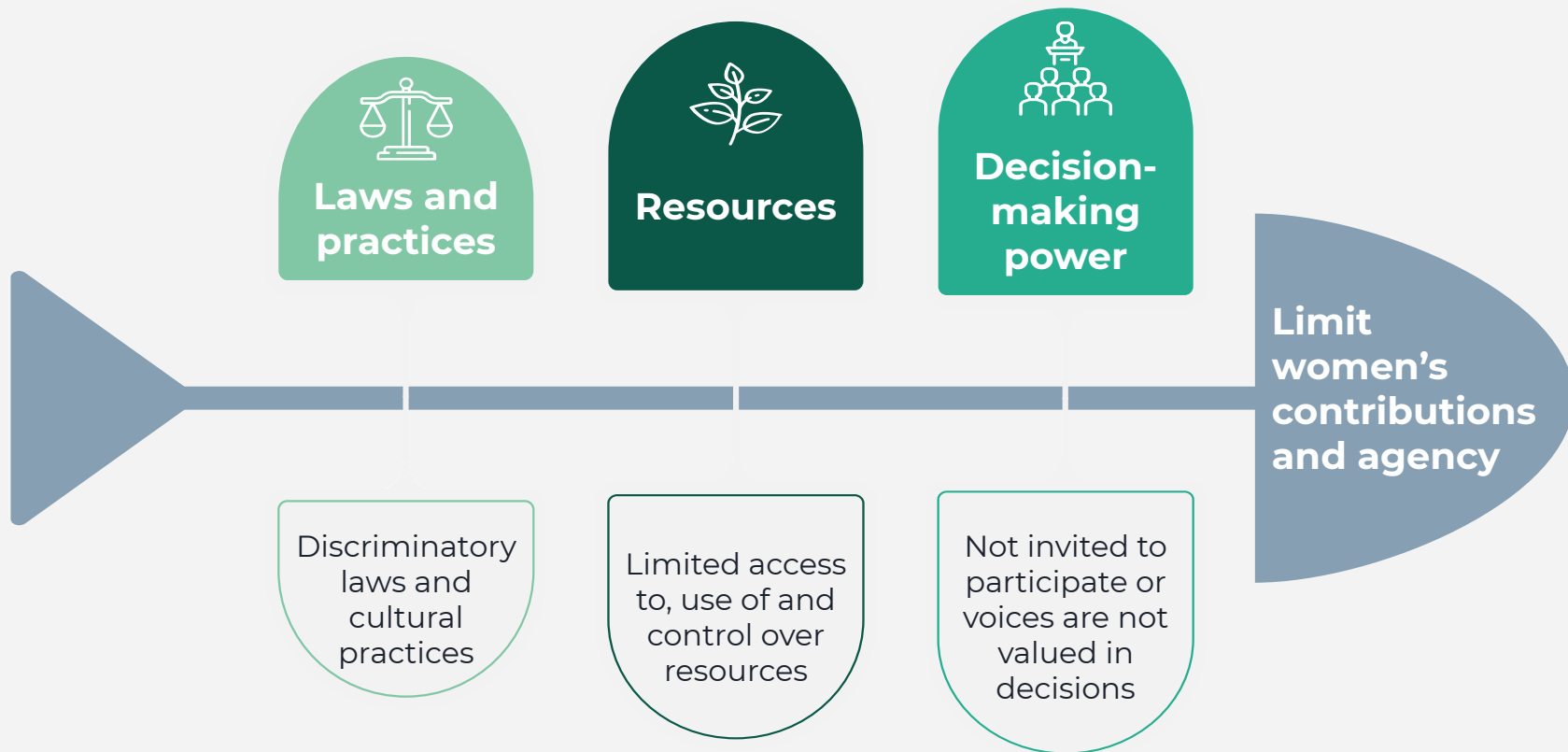


# *Climate change exacerbates existing inequalities*

- Of the **1.3 billion people** living in the deepest levels of poverty worldwide, the **majority are women** (~70%)
- Women work **2/3rd's** of the world's hours
- Women produce **1/2** the world's food; in rural areas, women produce 60-80% of staple crops
- And yet, women **earn only 10%** of the world's income and **lack rights to own land** in 90 countries.



# Inequality



“There is no such thing as a single-issue struggle,  
because we do not live single-issue lives.”

- Audre Lorde

### Inner circle:

Unique circumstances and experiences

### Second circle:

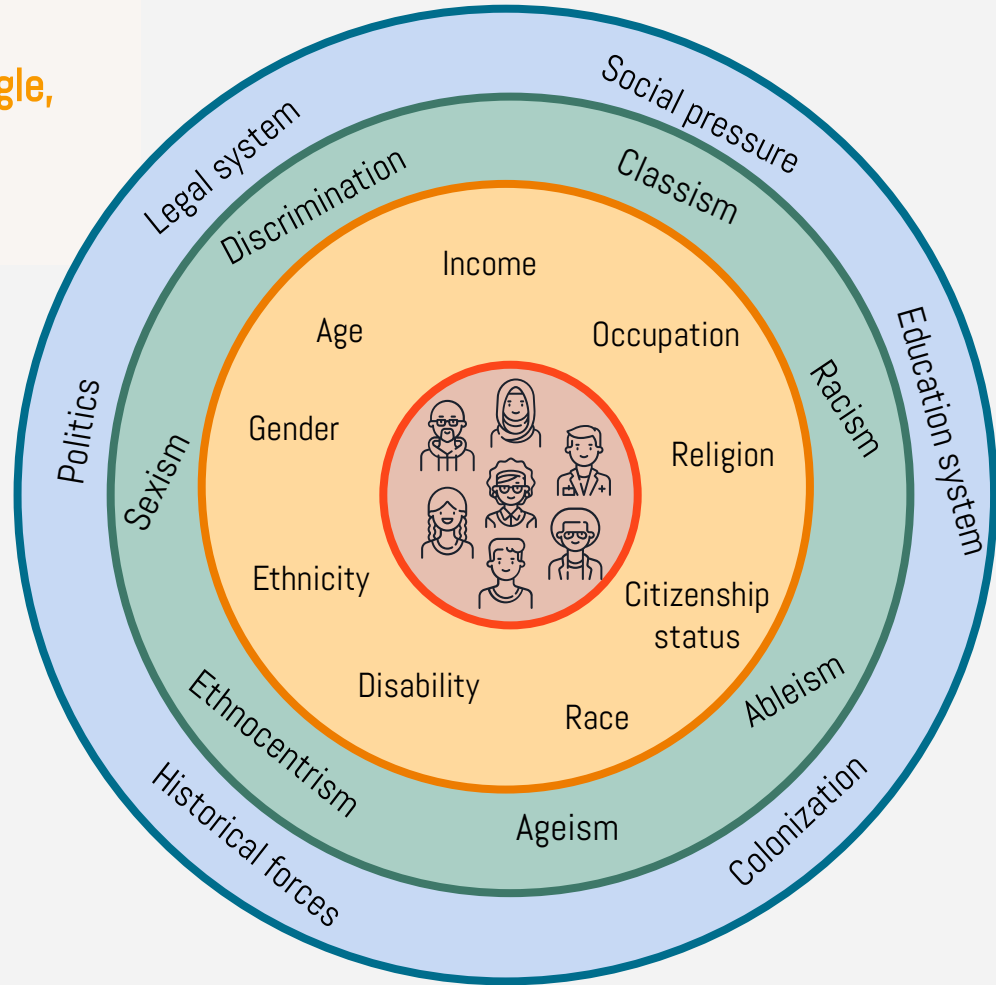
Aspects of identity

### Third circle:

Types of discrimination impacting  
identity

### Outer circle:

Larger forces and structures  
reinforcing exclusion





Gender and Climate Change  
in the United States: A  
Reading of Existing Research



PUBLISHED MARCH 2020 IN PARTNERSHIP WITH:



# Research in the U.S.

- Women make up only 19% of people interviewed, featured, or quoted in climate-related news coverage
- Men represent approximately 72% of workers in energy and fuels production. This includes workers in fields adversely affected by decarbonization efforts, such as coal, natural gas, and petroleum, as well as sectors benefiting from decarbonization, including wind and solar.
- Women are more likely than men to need to visit the ER for asthma- and respiratory-related conditions during wildfires
- Experiencing extreme weather events is associated with greater risks of low birth weight and preterm births

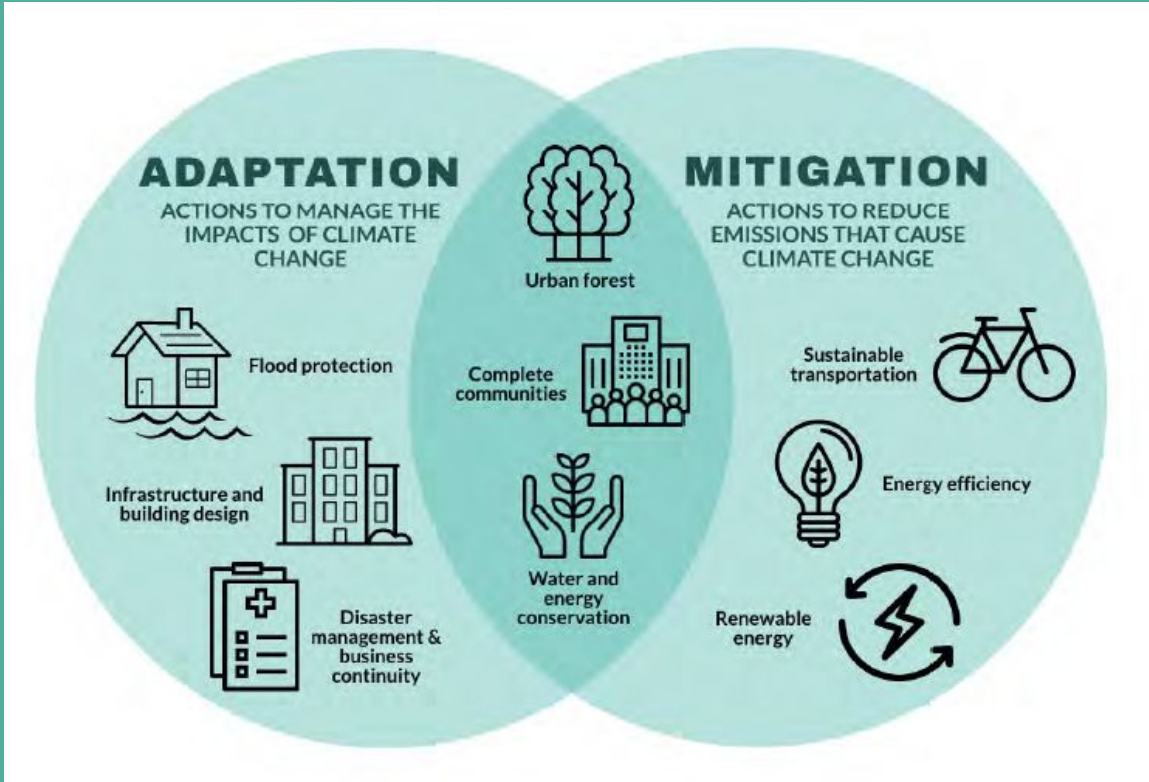


**We may be weathering the same storm, but we are not in the same boat**



**WHAT is climate justice?**





# CLIMATE JUSTICE

- Recognizes key groups are differently affected by climate change.
- Acknowledges that climate is also a racial (& gender) justice problem.
- Names that those most impacted by climate have been least responsible for its causes.
- Advocates for a world in which fairness, equity and ecological rootedness are core values.
- Focuses on solutions that are systemic, people-centered, equitable, and transformational - lead by the groups most impacted.









# PRINCIPLES

REQUIRE INTERSECTIONAL GENDER ANALYSIS ACROSS ALL ACTIONS  
 RECOGNISE THERE IS NO SUCH THING AS DOMESTIC CLIMATE POLICY  
 CONFRONT INSTITUTIONAL PATRIARCHY & RACISM  
 CENTER INDIGENOUS PEOPLES' RIGHTS & LEADERSHIP  
 SYSTEMICALLY CONFRONT EXPLOITATIVE & UNSUSTAINABLE PRODUCTION PRACTICES  
 ADVANCE REPRODUCTIVE JUSTICE  
 ENSURE DEMOCRATICALLY CONTROLLED COMMUNITY-LED SOLUTIONS  
 REJECT FALSE & HARMFUL RESPONSES TO CLIMATE CHANGE THAT FAIL TO ADDRESS ROOT CAUSES  
 CREATE A GENERATIVE ECONOMY THAT CENTER SYSTEMIC FEMINIST INTERPRETATIONS OF THE LEADERSHIP OF YOUNG PEOPLE AS THE RIGHT OF YOUNG GENERATIONS

WORKING TOWARDS JUSTICE



WHAT IS A FEMINIST GREEN NEW DEAL



JACQUI PATTERSON - N.A.C.P. AS MOVEMENTS, HOW DO WE TACKLE INTERSECTING CRISES, & HOW DO WE WIN?!

WE WIN WHEN FRONTLINE WOMEN



WHAT SEEMED IMPOSSIBLE LOOKS NOW COMMON SENSE



WHAT DOES IT LOOK LIKE TO BRING AN INTERSECTIONAL FEMINIST ANALYSIS TO THE CRISES WE'RE FACING RIGHT NOW?

RESILIENCY & A JUST RECOVERY



OSPREY ORIELLE, LAKE - W.E.C.M.I. WHAT DOES IT LOOK LIKE TO BE IN COLLECTIVE SOLIDARITY WITH PEOPLE & THE PLANET RIGHT NOW?



DIANA DUARTE, MADRE. WHAT WOULD A POLICY RESPONSE TO THE PANDEMIC ROOTED IN AN ETHIC OF CARE FOR PEOPLE & PLANET LOOK LIKE?

CARE WORK

- \* ESSENTIAL
- \* CENTRAL
- \* LIFE GIVING
- \* LOW CARBON

TARA HASKIN, G. INIWI COLLECTIVE. WHAT IS THE INTERCONNECTEDNESS OF CRISIS & STRUGGLE IN THIS MOMENT?



CLIMATE

COVID TO COME

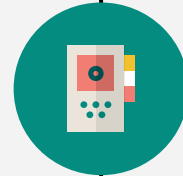
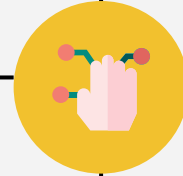
RIGHT NOW, PEOPLE HAVE AN APETITE FOR TRANSFORMATIVE SOLUTIONS... LETS PUT THEM ON THE TABLE!

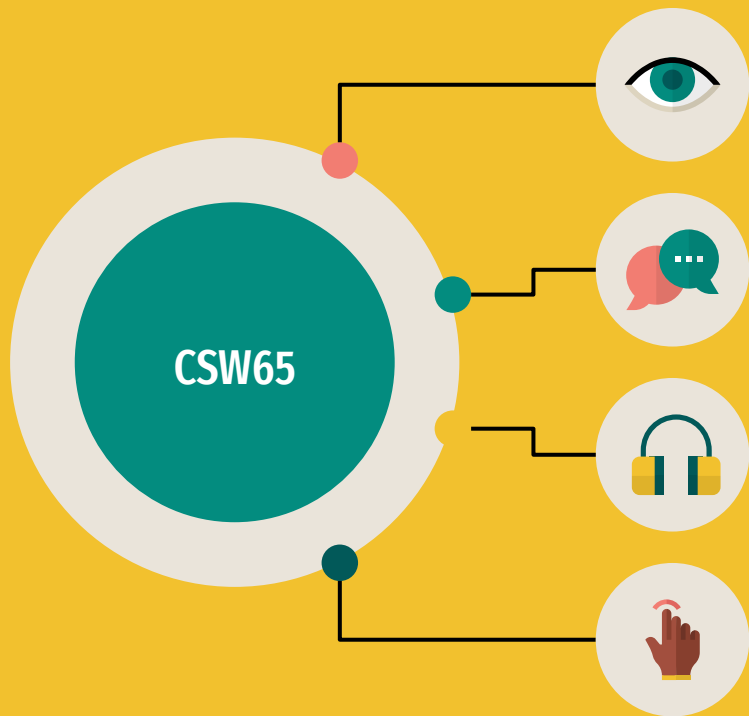


ETHIC OF CARE

WE CANNOT GO TO WAR, EVEN METAPHORICALLY!

# COP26 Glasgow: Success or Failure?





Urgency

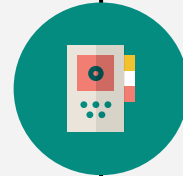
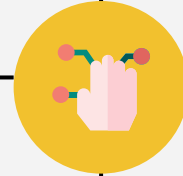
Developed vs  
Developing

Finance

Loss & Damage



# COP26 Glasgow: Success or Failure?



# Climate change is cross-cutting... and so is gender



**Policy/reform**



**Agriculture/food security**



**Water**



**Disaster risk reduction**



**Energy**



**Forests**



**Waste/recycling**



**Cities/urban**

Additional reflections?

